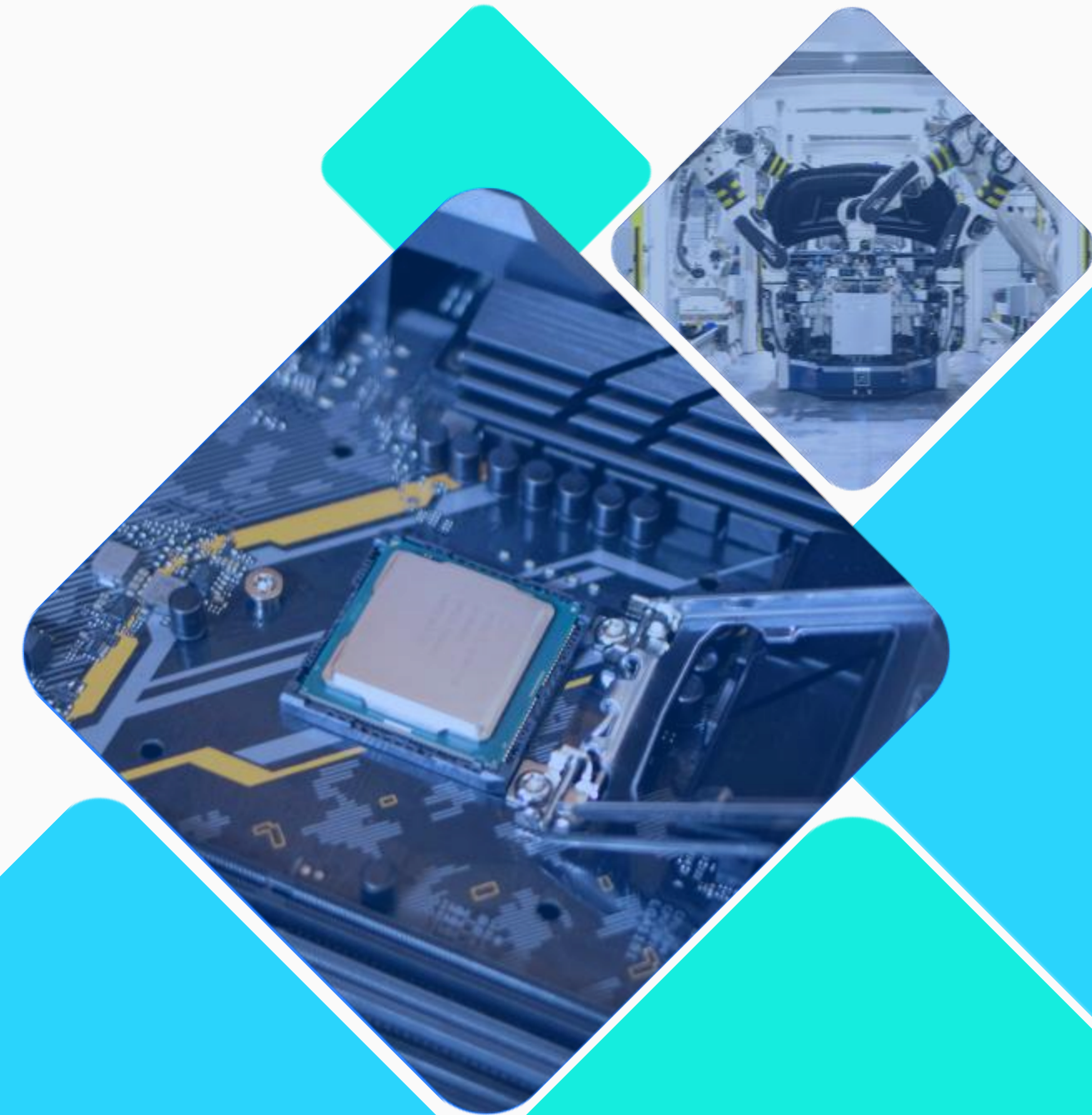




YNOT COMPANY INTRODUCTION

와이낫은 오랜 기간 반도체 업계 경험을 바탕으로
IT 기업들의 신뢰할 만한 반도체 공급 및 파트너 역할을 수행합니다.



• INDEX

목차

01

About 주식회사 와이낫

02

Y-NOT PRODUCT

03

적용사례

04

Vision AI

05

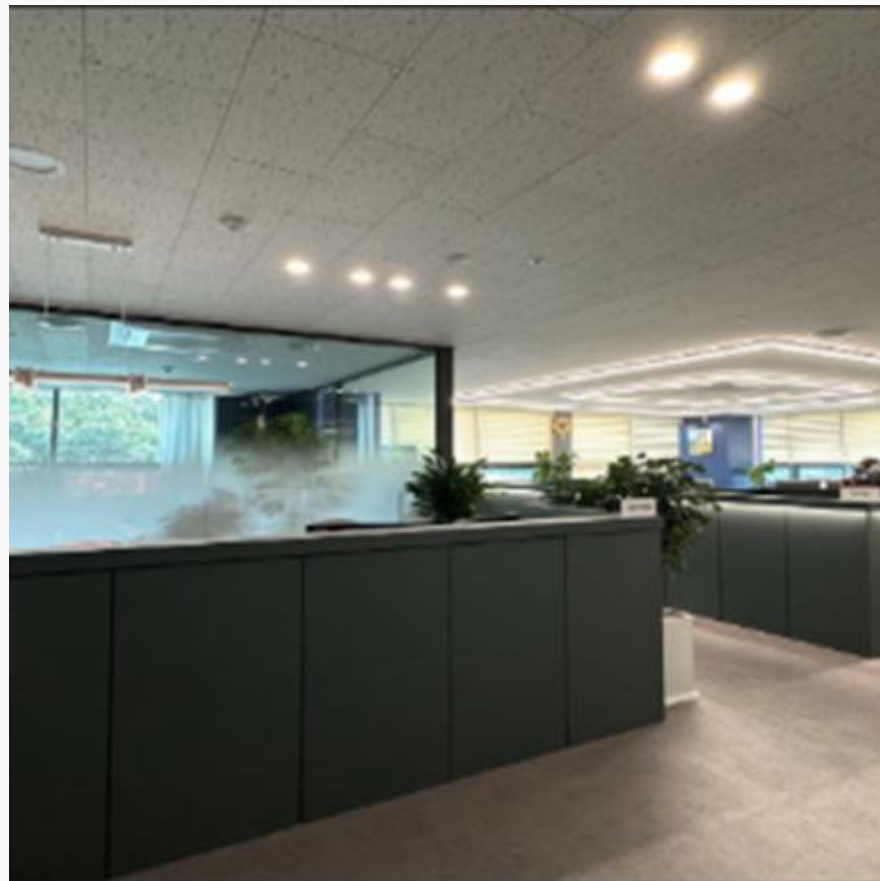
Turnkey Sourcing

About YNOT

H.Q location	Seoul, South Korea
Business Registration #	322-87-00686
Established in	Nov, 2015
CEO	최헌영 Jake Choi
Capital	300,000 USD
Revenue	15.50M USD
Manpower	Sales & Marketing 4, QC 1, Engineers 3, SCM 2, CS 1



Entrance to YNOT



Office & RND



Show Room



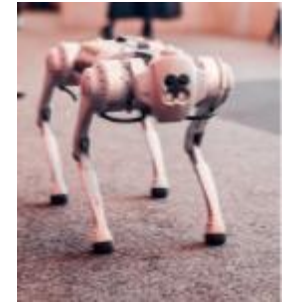
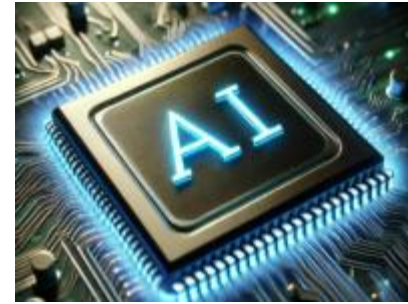
Conference Room



Inhouse Ware House

Hardware Eco-system

와이낫
적용분야



와이낫 설계지원

Edge IPC



nvidia. intel.
Qualcomm
NXP Rockchip

Vision & Sensing



Display HMI(LCD, OLED)/
Android PAD



Wi-Fi, BT , LTE , 5G
GNSS , LoRa, UWB



Memory storage
(SSD/SD Card/DRAM)



Battery & Charger adapter
& Power Supply



AI Solutions



BOXER-8658AI



BOXER-8640AI



BOXER-8623AI



BOXER-8645AI



BOXER-8652AI



BOXER-8253AI

Computing System



UP Boards
& UP System

+ AI Modules



Hailo-8™
M.2 2280



AI CORE X



MXM-ACMA

Embedded Boards



Rugged Mobile Devices & Panel PC



Single Board Computer



de next-TGU8

86 x 55mm Single Board with 11th Generation Intel® Core™ i7/i5/i3 Processor



de next-V2K8

86 x 55mm Single Board with AMD Ryzen™ Embedded V2000 Series Processor



PICO-RAP4

Pico-ITX Board with 13th Gen Intel® Core™ i7/i5/i3 Processor



PICO-ADN4 REV.B

Pico-ITX Board with Intel Atom® x7000E Series, Intel® Processor N-series, and Intel® Core™ i3 Processor N-series



UP SQUARED 7100

UP Squared 7100 | Developer Board with Intel® N-series SoC



UP XTREME 7100

UP Xtreme 7100 | UPX-ASLN Developer Board with Intel Processor N-series Processor



UP Squared Pro 7100 Edge I Intel N100 Processor.8GB RAM.64GB eMMC

Intel Processor N Series ; 12V DC-in



UP Squared Pro 7000 Edge Series

Intel Atom x 7000E Series / Processor N Series / N305 ; 12V DC-in



UP Squared IoT Edge [Wifi + LTE-Global]

Intel Atom x 7 - E3950; 5V DC in

HMI touch panel



Rugged All in One PC



AHP-1125

12.1" LCD with 500 Nits XGA LED Backlight
Onboard Intel® N3710/N3060 Processor
IP65 Plastic Front Bezel
DC 12V/ DC 9-30V
Fanless Operation



AHP-1154

Intel® Celeron® J1900, 2.0 GHz/ N2807, 1.58 GHz
15" LCD with 450 nits XGA LED Backlight
IP65 Plastic Front Bezel
RS-232/422/485 x 2, RS-232 x 2
Fanless Operation
Support DC 12V/ DC 9-30V



10.1 Inch Capacitive Screen, 10.1 inch 1280*800 HD, G+G Multi Touch Screen

Capacitive multi-touch screen (10 point)

MTK6762, OCTA CORE, 1.6GHz

4GB LPDDR4

64GB

802.11 a/ac/b/g/n, 2.4GHz+5GHz

YES

YES

Front 16.0MP + Rear 16.0MP beauty, panorama, night view

GSM: 850MHz/900MHz/1800MHz/1900MHz WCDMA: B1/B5/B8

TD-SCDMA: (B34/B39); LTE-TDD: (B38/B39/B40/B41); LTE-FDD: (B1/B2/B3/B4/B5/B7/B8/B12/B17/B20/B25/B26/B28/B66)

1*Type C

1* Dual sim card slot

1*Micro SD Card (TF Card)

1*3.5mm Earphone Jack

1*Power Button / 1*Volume +/-

15600mah/9V2.2A polymer battery

IP67 Rugged Waterproof / Anti-Dust and Drop

SBC SoC / SoM



	System On Module (1~25 TOPs support)	Embedded Board
	<p>Quad Cortex-A76 2.4GHz Quad Cortex-A55 1.8GHz</p> <ul style="list-style-type: none">* Processor: Rockchip RK3588, 4x Cortex-A76 cores @ 2.4GHz + 4x Cortex-A55 cores @ 1.8GHz* NPU: 6 TOPS* RAM: 8GB/16GB* Storage: 32GB/64GB/128GB* Pin out: 5x UART, USB3.0 HOST, 2x USB2.0 HOST, 2x Type-C, 2x MIPI CSI, MIPI DSI, MIPI DPHY, 2x HDMI TX, HDMI RX, DP, GbE, PCIe3.0x2.1, SATA, SDMMC, SDIO, PWM, SPI, CAN, SPDIF, ADC, I2C, I2S, PDM, GPIO, etc.* Operating system: Android 13, Debian 12, Buildroot* Dimensions: 67 x 53 mm* Package: 230-pin, 1.0mm pitch QFN, and 39-pin FPC connector for Camera	
	<ul style="list-style-type: none">• NXP i.MX8M Plus Quad Cortex-A53 1.6 GHz RISC Processor• Onboard LPDDR4 2GB / eMMC 16GB (Optional 4GB RAM/ eMMC 32GB)• HDMI 2.0a• GbE x 2• USB 3.0 x 2, Full size mPCIe x 2, CAN-FD x 2 CSI, Micro SD Card Slot x 1, RTC, TPM 2.0• Wide DC Input 9~36V• Wide Temperature -20 °C ~ 70 °C• UL61010 certificated; PLC and heavy industry IEC61000-6-2, IEC61000-6-4, IEC61131-2 qualified• Pre-Install Linux Debian 11; Support Android 13, Win 10 IoT, Yocto• Supports Modbus/ MQTT Library/ OPCUA/ Security boot/ GUI/ Machine learning etc (by request)	
	<p>Open-Q™ 8250CS SoM (System on Module)</p> <p>Based on Qualcomm® QCS8250 System-on-Chip with Android™ 13 OS Develop with the smallest QCS8250 SoM module in world Production ready</p>	

System On Module **MEDIATEK**



- High-performance MediaTek Genio 1200 Octa-Core SoC
- Powerful and efficient MediaTek Deep Learning Accelerators 2.0 and Cadence® Tensilica® Vision P6 NPUs supporting up to 4.8 TOPS
- Dual-band Wi-Fi 6 and optional 4G LTE
- 4K hardware accelerated H.265/H.264 video processing
- Dual display and dual MIPI CSI-2 camera support

Software Packages

Support Android 13, Yocto 4.0, and Debian 12. Software customization services that speed up time to market and minimize development costs are also available.

 Android 13.0 EVK	[1.25 GB]	v1.1.0
 Yocto 4.0.17 EVK	[1.33 GB]	v2.1.0

Application



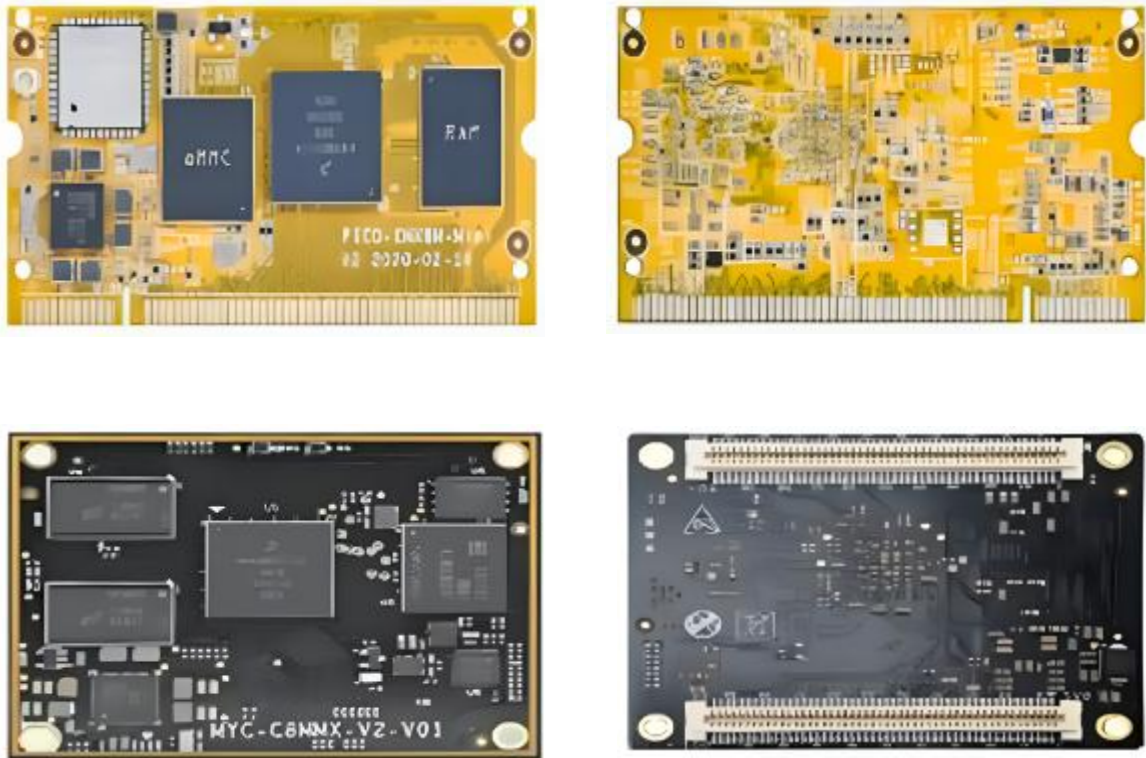
System On Module



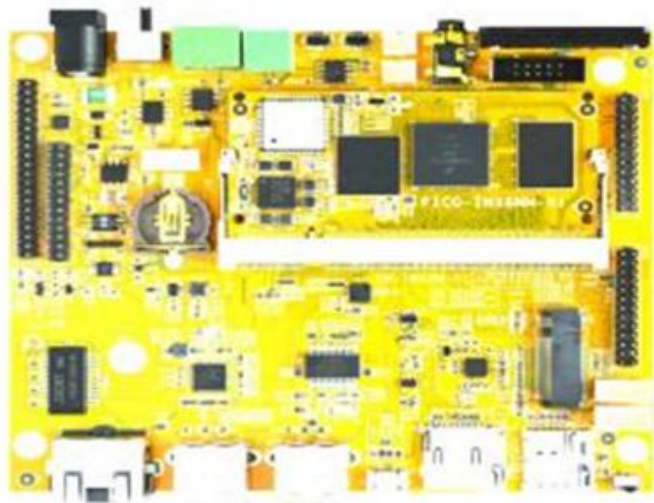
- NXP i.MX 8M Plus Quad Application Processor based on 1.6 GHz Arm Cortex-A53 and 800MHz Cortex-M7 Cores
- A Neural Processing Unit (NPU) Operating at up to 2.3 TOPS
- 2GB/3GB/4GB LPDDR4, 8GB eMMC Flash, 32MB QSPI Flash
- Power Management IC (PMIC)
- 0.5mm pitch 314-pin MXM 3.0 Gold-finger-edge-card Connector
- Supports Working Temperature Ranging from -40°C to 85°C
- Supports Running Linux L5.10.9

Family	Part Number	Configuration	Temperature
i.MX 8M Plus Quad	MIMX8ML8DVNLZAB	4x A53 (1.8Ghz), VPU, NPU, ISP	0°C - +95°C
i.MX 8M Plus Quad	MIMX8ML6DVNLZAB	4x A53 (1.8Ghz), VPU, ISP	0°C - +95°C
i.MX 8M Plus Quad Lite	MIMX8ML4DVNLZAB	4x A53 (1.8Ghz)	0°C - +95°C
i.MX 8M Plus Dual	MIMX8ML3DVNLZAB	2x A53 (1.8Ghz), VPU, NPU, ISP	0°C - +95°C
i.MX 8M Plus Quad	MIMX8ML8CVNKZAB	4x A53 (1.6Ghz), VPU, NPU, ISP, CAN-FD	-40°C - +105°C
i.MX 8M Plus Quad	MIMX8ML6CVNKZAB	4x A53 (1.6Ghz), VPU, ISP, CAN-FD	-40°C - +105°C
i.MX 8M Plus Quad Lite	MIMX8ML4CVNKZAB	4x A53 (1.6Ghz), CAN-FD	-40°C - +105°C
i.MX 8M Plus Dual	MIMX8ML3CVNKZAB	2x A53 (1.6Ghz), VPU, NPU, ISP, CAN-FD	-40°C - +105°C

Formfactor



Application



System On Module

Quad Cortex-A76 2.4GHz
+
Quad Cortex-A55 1.8GHz



- * Processor: Rockchip RK3588. 4x Cortex-A76 cores @ 2.4GHz + 4x Cortex-A55 cores @ 1.8GHz
- * NPU: 6 TOPS
- * RAM: 8GB/16GB
- * Storage: 32GB/64GB/128GB/256GB
- * Pin out: 5x UART, USB3.0 HOST, 2x USB2.0 HOST, 2x Type-C, 2x MIPI CSI, MIPI DSI, MIPI DPHY, 2x HDMI TX, HDMI RX, DP, GbE, PCIe3.0/2.1, SATA, SDMMC, SDIO, PWM, SPI, CAN, SPDIF, ADC, I2C, I2S, PDM, GPIO, etc.
- * Operating system: Android 14, Debian 12, Buildroot
- * Dimensions: 67 x 53 mm
- * Package: 230-pin, 1.0mm pitch QFN, and 39-pin FPC connector for Camera

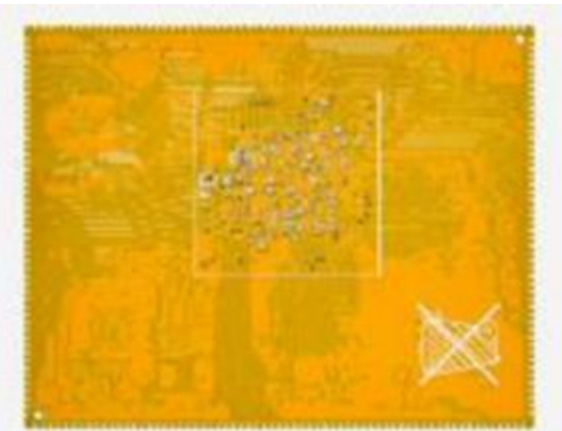
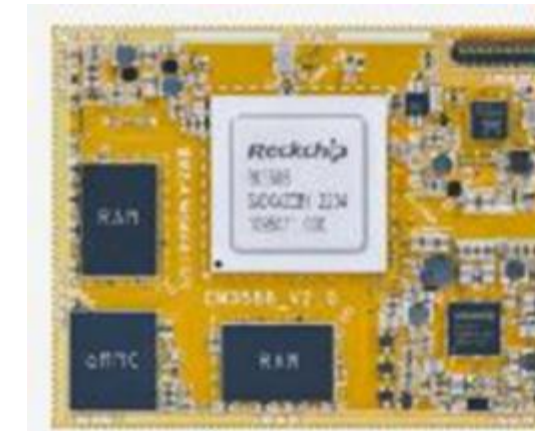
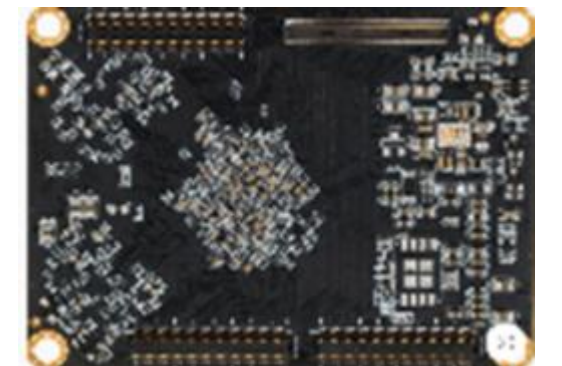
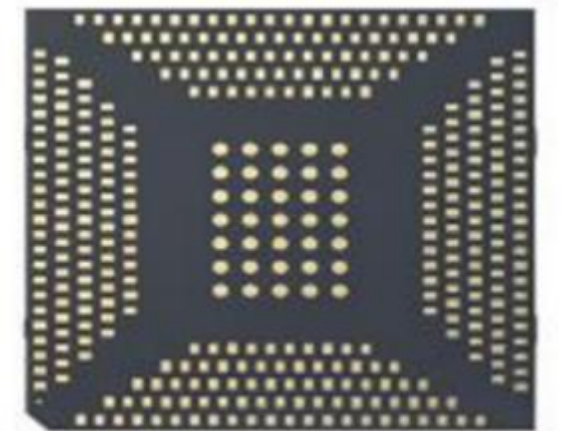
Application



Formfactor



MYC-LR3576 System-On-Module (top-view and bottom-view)



System On Module

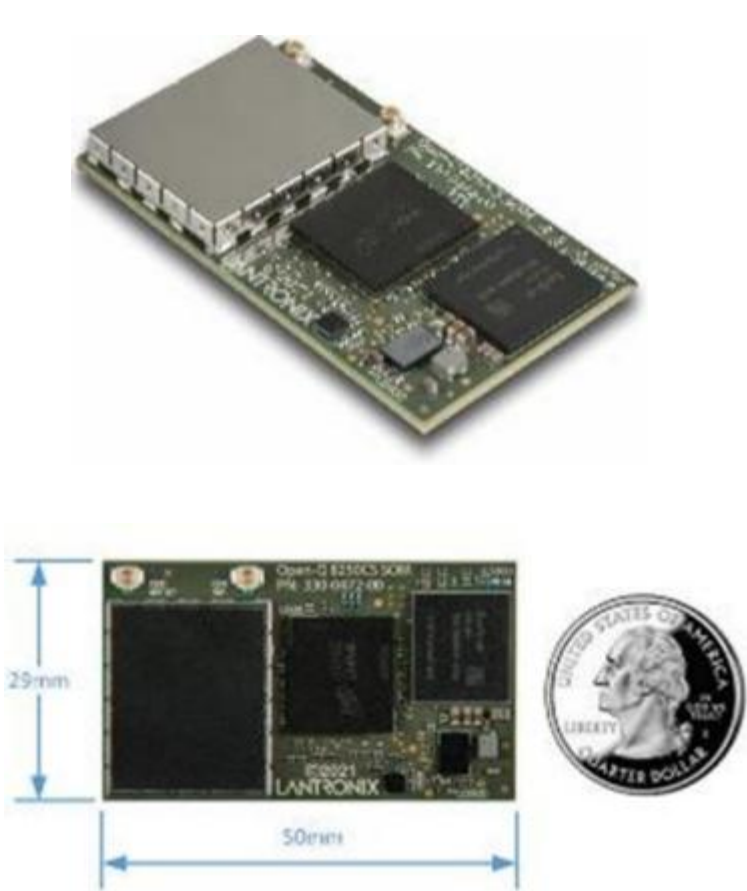
Hardware Specifications:

• Processors		Qualcomm® 8250CS SoC built on 7nm technology: Kryo™ 585 Octa-core CPU: 1 Kryo Gold prime @ 2.84 GHz + 3 Kryo Gold @ 2.42 GHz + 4 Kryo Silver @ 1.81 GHz Hexagon™ 698 DSP with quad Hexagon Vector eXtensions	
		Adreno™ 650 GPU @ Fmax = 587 MHz Spectra™ 480 Image Signal Processor Adreno™ 665 Video Processing unit	Adreno™ 995 Display Processing unit NPU230 Neural Processing unit SPU240 Secure Processing unit
• Memory/Storage		8GB or 16GB LPDDR5 @ 2750MHz, 128GB UFS	
• Wireless		802.11ax 2x2 MU-MIMO + Bluetooth 5.1, Bluetooth Milan ready	
• Display Interfaces		Up to three 4K displays (1 internal display through DSI and 2 external displays through DisplayPort) 2x 4-lane MIPI DSI D-PHY 1.2, up to 5040 × 2160 @ 60 fps (or 120 Hz in VR mode) + touchscreen support DisplayPort v1.4 on USB Type-C, at 8.1 Gbps/lane, with USB3 and USB2 data concurrency	
• Camera Interfaces		3x 4-lane MIPI CSI camera ports + CCI I2C control	Spectra 480 ISP supporting multiple concurrent cameras 64 MP 30 fps ZSL with a dual ISP
• Video Performance•	Decode	Video decode up to 4K240/8K60. Native decode support for H.265 Main 10, H.265 Main, H.264 High, VP9 profile 2, VP8, and MPEG-2 codecs	
	Encode	Video encode up to 4K120/8K30. Native encode support for H.265 Main 10, H.265 Main, H.264 High, and VP8 codecs	
	Dec & Enc	Concurrent 4K60 Dec and 4K30 Enc	
• Audio		Supports WCD938x high fidelity audio codec and WSA881x speaker amp on carrier board Dedicated Hexagon™ audio DSP, SoundWire, MI2S, DMIC, TDM/PCM interfaces for audio devices on carrier board	
• High Speed Connectivity		1x PCIe Gen3 2-lane 1x USB 3.1 with support for Type-C + DisplayPort v1.4 with USB SS data concurrency 1x USB 3.1 Type-A	
• I/O Interfaces		4-bit SD 3.0, UART, I2C, I3C, SPI, configurable GPIOs, sensor I/O to dedicated Hexagon™ sensor DSP	
• Power/Battery		Power management and battery charging solution on SOM	
• Operating Environment		Input voltage: 3.7V nominal Operating Temperature: -25 to +85°C	
• Form Factor		50mm x 29mm with 2x 100-pin + 1x 120-pin board to board connectors	

Software:

• OS Support	Android™ 13
--------------	-------------

Formfactor



Application



System On Module NVIDIA.

PERFORMANCE		MAINSTREAM			ENTRY	
2022	2023	2022	2023	2022	2022	2022
						
Jetson AGX Orin	Jetson Orin NX	Jetson AGX Xavier	Jetson Orin Nano	Jetson Xavier NX	Jetson TX2	Jetson Nano
GPU/NPU Specification						
GC : Graphic Core TC : Tensor Core						
248~275 TOPS	70~100 TOPS	30~32 TOPS	20~40TOPS	21 TOPS	1.26~1.33 TFLOPS	472 GFLOPS
2048GC / 64TC	1792GC / 56TC	512GC / 64TC	512~1024GC / 32TC	384GC / 48TC	256GC	128GC
1.3 GHz (Max)	978MHz (Max)	1.3 GHz (Max)	625 MHz (Max)	1.1 GHz (Max)	1.3 GHz (Max)	912 MHz (Max)
CPU Specification						
C : CPU Core						
8C ~ 12C	6C~8C	8C	6C	6C	2C	4C
2.2 GHz (Max)	2~2.2 GHz (Max)	2~2.2 GHz (Max)	1.5 GHz (Max)	1.9 GHz (Max)	1.92 ~ 2.0 GHz (Max)	1.43 GHz (Max)

Application



Edge AI PC & Server



BOXER-8642AI

AI@Edge Fanless Embedded AI System with NVIDIA® Jetson AGX Orin™



BOXER-8645AI

AI@Edge Fanless Embedded AI System with NVIDIA® Jetson AGX Orin™



BOXER-8652AI

AI@Edge Compact Fanless Embedded AI System with NVIDIA® Jetson Orin™ NX



BOXER-8651AI

AI@Edge Compact Fanless Embedded AI System with NVIDIA® Jetson Orin NX



BOXER-8622AI

AI@Edge Compact Fanless Embedded AI System with NVIDIA® Jetson Orin Nano™



UP SQUARED PRO 710H EDGE

UP Squared Pro 710H Edge | Intel AI solution with Hailo module

UP SQUARED PRO 710H EDGE

UP Squared Pro 710H Edge | Intel AI solution with Hailo module

- Intel Atom® x7000 RE Series, Intel® Processor N Series, and Intel® Core™ i3-N305 Processors
- Onboard Hailo-8™ edge AI processor
- Onboard LPDDR5 Memory, up to 16GB
- Onboard eMMC Storage, up to 128GB
- 2.5GbE x 2 (Intel® I226-T)
- USB 3.2 (Type-A) x 2
- 40-pin GPIO x 1
- DP 1.2 x 1 / HDMI 2.0b x 1
- RS-232/422/485 x 2
- M.2 2230 E-Key / M.2 2280 M-Key (Optional: M.2 3052 B-Key x 1)
- Onboard TPM 2.0
- 12V~36V DC-in with Phoenix Connector



MAXER-2100

AI Inference Server, 2U Rackmount, 12/13th Gen CPU

- High-performance for AI inference
- 12/13th Gen Intel® Core™ LGA1700 Socket Processors
- High CPU computing performance: Built in 19-13900, up to 16-13900E supported
- 2U Rack Mount, Front Access I/O Design
- M.2 2242/2280 M-Key x 2
- M.2 3042/3052/2242 B-Key + Micro SIM Slot
- M.2 2230 E-Key x 1
- Onboard TPM 2.0

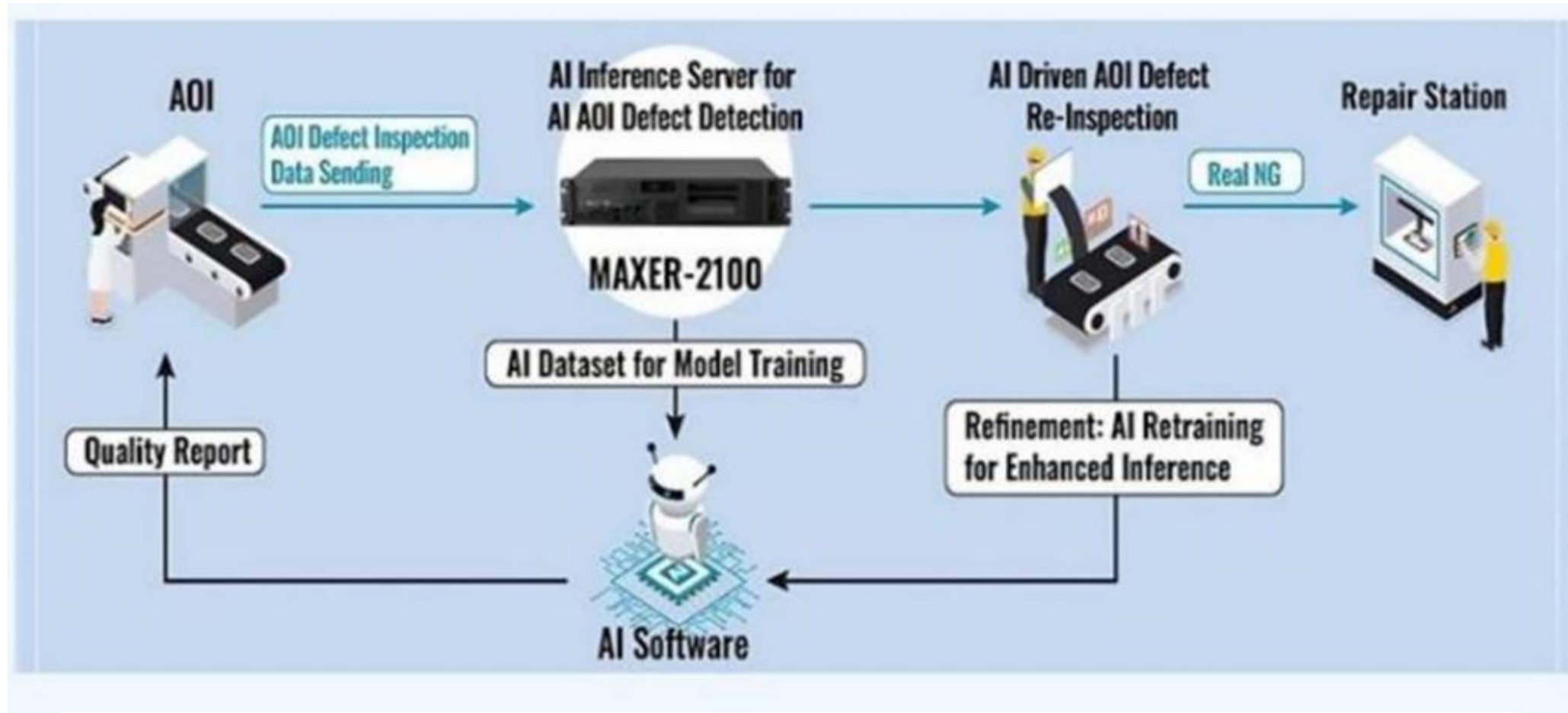


ZEUS-PURO

4U Rackmount Purley Platform Server System, Support Xeon® FPGA CPU | ZEUS-PURO

- 4U Rackmount Server System
- Dual Intel® Xeon® Processor SkyLake-SP and Cascade Lake-SP processor
- Intel® Communications Chipset C621
- 12GB / 24GB / 48GB / 96GB / 192GB / 384GB / 768GB / 1536GB / 3072GB / 6144GB / 12288GB / 24576GB / 49152GB / 98304GB / 196608GB / 393216GB / 786432GB / 1572864GB / 3145728GB / 6291456GB / 12582912GB / 25165824GB / 50331648GB / 100663296GB / 201326592GB / 402653184GB / 805306368GB / 1610612736GB / 3221225472GB / 6442450944GB / 12884901888GB / 25769803776GB / 51539607552GB / 103079215104GB / 206158430208GB / 412316860416GB / 824633720832GB / 1649267441664GB / 3298534883328GB / 6597069766656GB / 13194139533312GB / 26388279066624GB / 52776558133248GB / 105553116266496GB / 211106232532992GB / 422212465065984GB / 844424930131968GB / 1688849860263936GB / 3377699720527872GB / 6755399441055744GB / 13510798882111488GB / 27021597764222976GB / 54043195528445952GB / 108086391056891904GB / 216172782113783808GB / 432345564227567616GB / 864691128455135232GB / 1729382256910270464GB / 3458764513820540928GB / 6917529027641081856GB / 13835058055282163712GB / 27670116110564327424GB / 55340232221128654848GB / 110680464442257309696GB / 221360928884514619392GB / 442721857769029238784GB / 885443715538058477568GB / 1770887431076116955136GB / 3541774862152233910272GB / 7083549724304467820544GB / 14167099448608935641088GB / 28334198897217871282176GB / 56668397794435742564352GB / 113336795588871485128704GB / 226673591177742970257408GB / 453347182355485940514816GB / 906694364710971881029632GB / 1813388729421943762059264GB / 3626777458843887524118528GB / 7253554917687775048237056GB / 14507109835375550096474112GB / 29014219670751100192948224GB / 58028439341502200385896448GB / 116056878683004400771792896GB / 232113757366008801543585792GB / 464227514732017603087171584GB / 928455029464035206174343168GB / 1856910058928070412348686336GB / 3713820117856140824697372672GB / 7427640235712281649394745344GB / 14855280471424563298789490688GB / 29710560942849126597578981376GB / 59421121885698253195157962752GB / 118842243771396506390315925504GB / 237684487542793012780631851008GB / 475368975085586025561263702016GB / 950737950171172051122527404032GB / 1901475900342344102245054808064GB / 3802951800684688204490109616128GB / 7605903601369376408980219232256GB / 15211807202738752817960438464512GB / 30423614405477505635920876929024GB / 60847228810955011271841753858048GB / 121694457621910022543683507716096GB / 243388915243820045087367015432192GB / 486777830487640090174734030864384GB / 973555660975280180349468061728768GB / 1947111321950560360698936123457536GB / 3894222643901120721397872246915072GB / 7788445287802241442795744493830144GB / 15576890575604482885591488987660288GB / 31153781151208965771182977975320576GB / 62307562302417931542365955950641152GB / 124615124604835863084731911901282304GB / 249230249209671726169463823802564608GB / 498460498419343452338927647605129216GB / 996920996838686904677855295210258432GB / 1993841993677373809355710590420516864GB / 3987683987354747618711421180841033728GB / 7975367974709495237422842361682067456GB / 15950735949418990474845684723364134912GB / 31901471898837980949691369446728269824GB / 63802943797675961899382738893456539648GB / 127605887595351923798765477786913079296GB / 255211775190703847597530955573826158592GB / 510423550381407695195061911147652317184GB / 1020847100762815390390123822295304634368GB / 2041694201525630780780247644590609268736GB / 4083388403051261561560495289181218537472GB / 8166776806102523123120990578362437074944GB / 16333553612205046246241981156724874149888GB / 32667107224410092492483962313449748299776GB / 65334214448820184984967924626899496599552GB / 130668428897640369969935849253798993199104GB / 261336857795280739939871698507597986398208GB / 522673715590561479879743397015195972796416GB / 1045347431181122959759486794030391945592832GB / 2090694862362245919518973588060783891185664GB / 4181389724724491839037947176121567782371328GB / 8362779449448983678075894352243135564742656GB / 16725558898897967356151788704486271129484512GB / 33451117797795934712303577408972542258969024GB / 66902235595591869424607154817945084517938048GB / 133804471191183738849214309635890169035876096GB / 267608942382367477698428619271780338071752192GB / 535217884764734955396857238543560676143504384GB / 1070435769529469910793714477087121352287008768GB / 2140871539058939821587428954174242704574017536GB / 4281743078117879643174857908348485409148035104GB / 8563486156235759286349715816696970818296070208GB / 17126972312471518572699431633393941636592140416GB / 34253944624943037145398863266787883273184280832GB / 68507889249886074290797726533575766546368561664GB / 137015778499772148581595453067151533092737123328GB / 274031556999544297163190906134303066185474246656GB / 548063113999088594326381812268606132370948493312GB / 1096126227998177188652763624537212264741896986624GB / 2192252455996354377305527249074424529483793973248GB / 4384504911992708754611054498148849058967587946496GB / 8769009823985417509222108996297698117935175892992GB / 17538019647970835018444217992595396235870351785984GB / 35076039295941670036888435985190792471740703571968GB / 70152078591883340073776871970381584943481407143936GB / 140304157183766680147553743940763169886962814287872GB / 280608314367533360295107487881526339773925628575744GB / 561216628735066720590214975763052679547851257151488GB / 1122433257470133441180429951526105359095702514302976GB / 2244866514940266882360859903052210718191405028605952GB / 4489733029880533764721719806104421436382810057211904GB / 8979466059761067529443439612208842872765620114423808GB / 17958932119522135058886879224417685745531240228847616GB / 35917864239044270117773758448835371491062480457695232GB / 71835728478088540235547516897670742982124960915390464GB / 1436714569561770804710950337953414859642499218307808GB / 2873429139123541609421900675906829719284998436615616GB / 5746858278247083218843801351813659438569996873231232GB / 11493716556494166437687602703627318877139993664462464GB / 22987433112988332875375205407254637754279987328924928GB / 45974866225976665750750410814509275508559974657849856GB / 91949732451953331501500821629018551017119949315699712GB / 183899464803906663003001643258037102034239898631399424GB / 367798929607813326006003286516074204068479797262798848GB / 735597859215626652012006573032148408136959594525597696GB / 1471195718431253304024013146064296816273919189051195392GB / 294239143686250660804802629212859363254783837810239072GB / 588478287372501321609605258425718726509567675620478144GB / 1176956574745002643219210516851437453019135351240956288GB / 2353913149490005286438421033702874906038270702481912576GB / 4707826298980010572876842067405749812076541404963825152GB / 9415652597960021145753684134811499624153082809927650304GB / 18831305195920042291507368269622999248306165619855300608GB / 37662610391840084583014736539245998496612312239710601216GB / 75325220783680169166029473078491996993224624479421202432GB / 150650441567360338332058946156983993986449248958842404864GB / 301300883134720676664117892313967987972898497917684809728GB / 602601766269441353328235784627935975945796995835369619456GB / 120520353253888270665647156925587195189159399167073938912GB / 241040706507776541331294313851174390378318798334147877824GB / 482081413015553082662588627702348780756637596668295755648GB / 964162826031106165325177255404697561513275193336591511296GB / 1928325652062212330650354510809395123026550386673183022592GB / 3856651304124424661300709021618790246053100773346366045184GB / 7713302608248849322601418043237580492106201546692732090368GB / 15426605216497698645202836086475160984212403093385464180736GB / 30853210432995397290405672172950321968424806186770928361472GB / 61706420865990794580811344345900643936849612373541856722944GB / 123412841731981589161622688691801287873699224747083713445888GB / 246825683463963178323245377383602575747398449494167426891776GB / 493651366927926356646490754767205151494796898988334853783552GB / 987302733855852713292981509534410302989593797976669707567104GB / 1974605467711705426585963019068820605979187595953339415134208GB / 3949210935423410853171926038137641211958375191906678830268416GB / 7898421870846821706343852076275282423916750383813357660536832GB / 15796843741693643412687704152550564847833500767626715321073664GB / 31593687483387286825375408305101129695667001535253430642147328GB / 63187374966774573650750816610202259391334003070506861284294656GB / 126374749933549147301501633220404518782668006141013722568589312GB / 252749499867098294603003266440809037565336012282027445137178624GB / 505498999734196589206006532881618075130672024564054890274357248GB / 1010997999468393178412013065763236150261344049128109780548714496GB / 2021995998936786356824026131526472300522688098256219561097428992GB / 4043991997873572713648052263052944601045376196512439122194857984GB / 8087983995747145427296104526105889202090752393024878244389715968GB / 16175967991494290854592209052211778404181504786049756488779431936GB / 32351935982988581709184418104423556808363009572099512977558863872GB / 64703871965977163418368836208847113616726019144199025955117727744GB / 129407743931954326836737672417694227233452038288398051910235455488GB / 258815487863908653673475344835388454466904076576796103820470910976GB / 517630975727817307346950689670776908933808153153592207640941821952GB / 1035261951455634614693901379341553817867616306307184415281883643904GB / 2070523902911269229387802758683107635735232612614368830563767287808GB / 4141047805822538458775605517366215271470465225228737661127534575616GB / 8282095611645076917551211034732430542940930450457475322255069151232GB / 16564191223290153835102422069464861085881860900914950644510138302464GB / 33128382446580307670204844138929722171763721801829901289020276604928GB / 66256764893160615340409688277859444343527443603659802578040553209856GB / 132513529786321230680819376555718888687054887207319605156081106419712GB / 265027059572642461361638753111437777374109774414639210312162212839424GB / 530054119145284922723277506222875554748219548829278420624324425678848GB / 1060108238290569845446555012445751109496439097658556841248648851377792GB / 2120216476581139690893110024891502218992878195317113682497297702755584GB / 4240432953162279381786220049783004377985756390634227364994595405511168GB / 8480865906324558763572440099566008755971512781268454729989190811022336GB / 16961731812649117527144880199132017511943025562536909459978381622044672GB / 33923463625298235054289760398264035023886051125073818919956763244089344GB / 67846927250596470108579520796528070047772102250147637839913526488178688GB / 135693854501192940217159041593056140095544204500295327679827052976357376GB / 271387709002385880434318083186112280191088409000590655359654105952714752GB / 542775418004771760868636166372224560382

AI Inspection



MAXER-2100

AI Inference Server, 2U Rackmount, 12/13th Gen CPU

- High-performance for AI inference
- 12/13th Gen Intel® Core™ LGA1700 Socket Processors
- High CPU computing performance: Build in i9-13900, up to i9-13900K supported
- 2U Rack Mount, Front Access I/O Design
- M.2 2242/2280 M-Key x 2
- M.2 3042/3052/2242 B-Key + Micro SIM Slot
- M.2 2230 E-Key x 1
- Onboard TPM 2.0

YNOT Core

1. SoM 을 이용한 Embedded 보드 개발지원
2. SoM Customizing for 동아엘텍 SPEC
3. SoM + Carrier H/W Customizing
4. AI Edge H/W Customizing
5. AI Engine support (라벨링 / 추론 데이터 학습)



BOXER-8642AI

AI@Edge Fanless Embedded AI System with NVIDIA® Jetson AGX Orin™



UP SQUARED PRO 710H EDGE

UP Squared Pro 710H Edge | Intel AI solution with Hailo module

Wireless Connectivity

	WiFi BT module KC / FCC / CE / TELEC Certified	Automotive WLAN Module AQC-100 Certified	WiFi BT Combo IoT with Matter Module KC / FCC / CE / TELEC Certified	Industrial WiFi module KC / FCC / CE / TELEC Certified	Cellular Module IoT / LTE-M / NB-IoT
MAKER					
ITEM					
MODEL	<ul style="list-style-type: none"> WLAN Module WLAN+BT Combo Module 	Automotive WIFI/BT Module <ul style="list-style-type: none"> LENS BMS supplier with design support 	<ul style="list-style-type: none"> WLAN Module BT Module WLAN+BT Combo Module IoT / IoT with Matter Module 	<ul style="list-style-type: none"> WLAN Module PCIe / M.2 / USB interface BT Module WLAN+BT Combo Module IoT Module 	Cellular 5G : mmWave, Sub-6 Cellular LTE : Cat1, 4, 6, 11, 12, 13, 18 Cellular LPWA : LTE-M, NB-IoT Global Major Network certified LG U+ / KT certified

Display - AMOLED, LCD Module

Whatever Size & Spec you need ????

AMOLED / TFT Touch LCD

Flexible Display

Round Watch OLED

Transparent Display

Customized Display



- Customizing Service at Reasonable price

- Best Quality

- Customizing service: I/F, Touch IC, Brightness, etc
- Providing QC process info to Customers
- Extra QC (Reliability Test) Available at manufacturer side
- AD board Customizing

• TFT-LCD Display Module

(1.22" ~ 21.5" , LVDS, eDP, SPI, MIPI, RGB I/F)

• Touch Panel and AD Board Customizable.(CTP & RTP)

• On/In Cell touch compatible

• 1.39" AMOLED MIPI SPI I/F


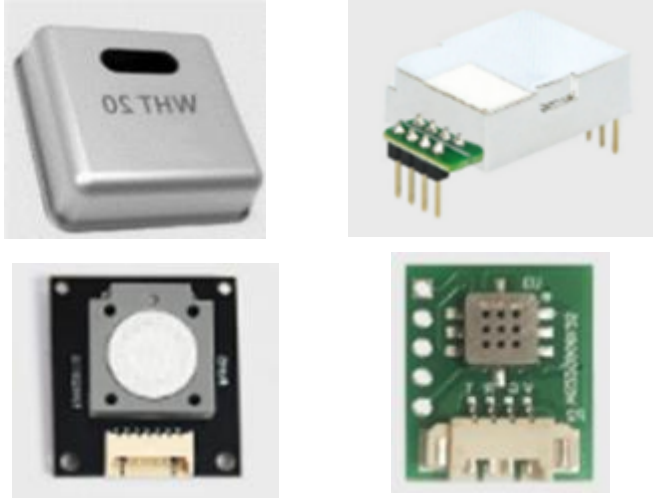
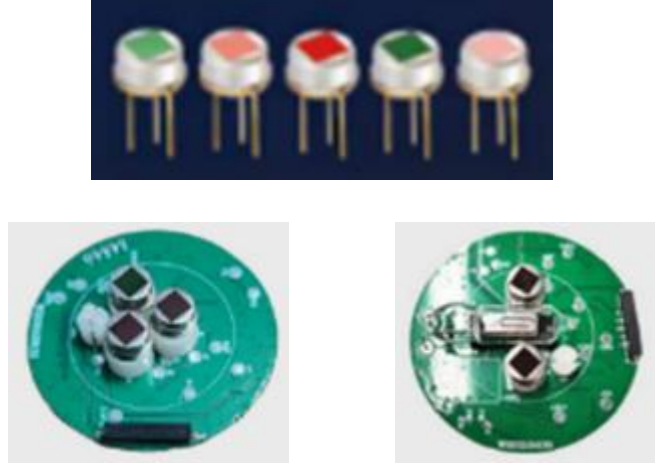
• 0.96" to 2.8", PMOLED enable On/In cell touch





Camera Module

	GMSL	USB 3.0	Stereo																																																				
MODEL																																																							
SPEC	<p>Model : SG2-IMX390C-5200-G2A-Hxxx</p> <p>Resolution : 1920H*1080V</p> <p>Frame Rate : 1920*1080@30fps</p> <p>Sensor : SONY 2.12MP IMX390 RGGB</p> <p>Connector : Amphenol Fakra (ZCode)</p> <p>Output data : YUV422@8bit</p> <p>Serializer : MAXIM MAX9295A</p> <p>Sensor Type : Rolling Shutter</p> <p>Operating temp.range : -40°C ~ +85°C</p> <p>Dimensions : 30mm*30mm*22.5mm</p> <p>FOV : HFOV 30°/100°/118.4°/196°</p> <p>Weight : <50g</p>	<table><tr><td>Sensor</td><td>1/2.8" SONY IMX307 CMOS</td></tr><tr><td>Pixel</td><td>2 Mega Pixel</td></tr><tr><td>Most effective pixels</td><td>1920(H) x 1080(V)</td></tr><tr><td>Pixel Size</td><td>2.9µm x 2.9µm</td></tr><tr><td>Image area</td><td>1937(H) x 1097(V)</td></tr><tr><td>Compression format</td><td>MJPEG / YUV2/H.264</td></tr><tr><td>Shutter Type</td><td>Electronic rolling shutter</td></tr><tr><td>Power supply</td><td>USB BUS POWER</td></tr><tr><td>Power consumption</td><td>DC 5V, 260mW</td></tr><tr><td>Dimension</td><td>32mm x 32mm</td></tr><tr><td>Storage temperature</td><td>-40 — 85 °C</td></tr><tr><td>Operating temperature</td><td>-30 — 85 °C</td></tr><tr><td rowspan="4">Support OS</td><td>WinXP/Vista/Win7/Win8/Win10</td></tr><tr><td>Linux with UVC(above linux-2.6.26)</td></tr><tr><td>MAC-OS X 10.4.8 or later</td></tr><tr><td>Android 4.0 or above with UVC</td></tr></table>	Sensor	1/2.8" SONY IMX307 CMOS	Pixel	2 Mega Pixel	Most effective pixels	1920(H) x 1080(V)	Pixel Size	2.9µm x 2.9µm	Image area	1937(H) x 1097(V)	Compression format	MJPEG / YUV2/H.264	Shutter Type	Electronic rolling shutter	Power supply	USB BUS POWER	Power consumption	DC 5V, 260mW	Dimension	32mm x 32mm	Storage temperature	-40 — 85 °C	Operating temperature	-30 — 85 °C	Support OS	WinXP/Vista/Win7/Win8/Win10	Linux with UVC(above linux-2.6.26)	MAC-OS X 10.4.8 or later	Android 4.0 or above with UVC	<table><tr><td>Model No</td><td>SNS-5MP-DualOV5640</td></tr><tr><td>Sensor</td><td>1/4" Omnivision OV5640 CMOS</td></tr><tr><td>Pixel</td><td>5 Mega Pixel</td></tr><tr><td>Shutter Type</td><td>Electronic rolling shutter</td></tr><tr><td>Focus type</td><td>Fixed focus</td></tr><tr><td>Interface type</td><td>USB2.0</td></tr><tr><td>Dimension</td><td>65MM x 42MM</td></tr><tr><td>Storage temperature</td><td>-20°C to 70°C</td></tr><tr><td>Operating temperature</td><td>0°C to 60°C</td></tr><tr><td rowspan="4">Support OS</td><td>WinXP/Vista/Win7/Win8/Win10</td></tr><tr><td>Linux with UVC(above linux-2.6.26)</td></tr><tr><td>MAC-OS X 10.4.8 or later</td></tr><tr><td>Android 4.0 or above with UVC</td></tr></table>	Model No	SNS-5MP-DualOV5640	Sensor	1/4" Omnivision OV5640 CMOS	Pixel	5 Mega Pixel	Shutter Type	Electronic rolling shutter	Focus type	Fixed focus	Interface type	USB2.0	Dimension	65MM x 42MM	Storage temperature	-20°C to 70°C	Operating temperature	0°C to 60°C	Support OS	WinXP/Vista/Win7/Win8/Win10	Linux with UVC(above linux-2.6.26)	MAC-OS X 10.4.8 or later	Android 4.0 or above with UVC
Sensor	1/2.8" SONY IMX307 CMOS																																																						
Pixel	2 Mega Pixel																																																						
Most effective pixels	1920(H) x 1080(V)																																																						
Pixel Size	2.9µm x 2.9µm																																																						
Image area	1937(H) x 1097(V)																																																						
Compression format	MJPEG / YUV2/H.264																																																						
Shutter Type	Electronic rolling shutter																																																						
Power supply	USB BUS POWER																																																						
Power consumption	DC 5V, 260mW																																																						
Dimension	32mm x 32mm																																																						
Storage temperature	-40 — 85 °C																																																						
Operating temperature	-30 — 85 °C																																																						
Support OS	WinXP/Vista/Win7/Win8/Win10																																																						
	Linux with UVC(above linux-2.6.26)																																																						
	MAC-OS X 10.4.8 or later																																																						
	Android 4.0 or above with UVC																																																						
Model No	SNS-5MP-DualOV5640																																																						
Sensor	1/4" Omnivision OV5640 CMOS																																																						
Pixel	5 Mega Pixel																																																						
Shutter Type	Electronic rolling shutter																																																						
Focus type	Fixed focus																																																						
Interface type	USB2.0																																																						
Dimension	65MM x 42MM																																																						
Storage temperature	-20°C to 70°C																																																						
Operating temperature	0°C to 60°C																																																						
Support OS	WinXP/Vista/Win7/Win8/Win10																																																						
	Linux with UVC(above linux-2.6.26)																																																						
	MAC-OS X 10.4.8 or later																																																						
	Android 4.0 or above with UVC																																																						

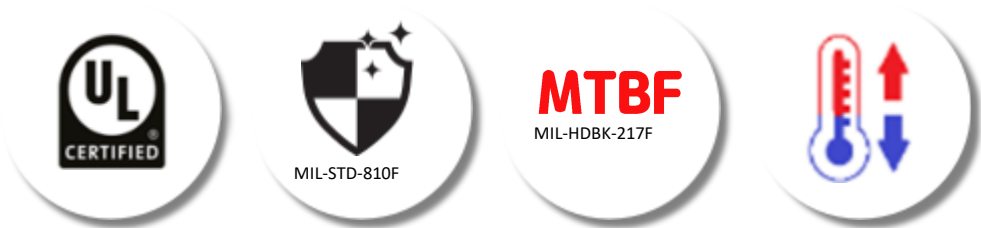
Sensors1

	Vision Camera / LiDAR	환경 계측 (Environmental)	불꽃 감지 (Flame Detection)
Desc	GMSL / ToF / Depth / RGB Stereo / Vision 2D 3D LiDAR	Co2 / Gas / Dust Temp / Humidity / Mems	Pyroelectric Flame UV Sensor Combination Module
ITEM			
MODEL	<ul style="list-style-type: none">· ToF LiDAR – 12~40 meter, 32,000~60,000 scan/sec, 270~360 degree, operating at 80,000 lux, Indoor/Outdoor· Depth (87° × 58°, Stereoscopic), RGB (69° × 42°, Rolling Shutter), .3 m to 3 m· Depth (87° × 58°, Stereoscopic), RGB (90° × 65°, Global Shutter), .6 m to 6 m	<ul style="list-style-type: none">· CO Sensor – 500~1,000ppm· CO2 Sensor - 400~10,000ppm, +/-50ppm Temp. & Humidity Sensor· VOC (Volatile organic compounds, Air-Quality) Sensor· Combo Sensor Module	<ul style="list-style-type: none">· Pyroelectric Flame Sensor – IR Flame Sensor, Range from 3.8um to 5.0um, Long and Wide Range, Low Noise & Anti-vibration Interference· UV Sensor – 185~260nm wavelength, High-sensitivity and Fast response, Electric Spark· Module Sensor – Combination module of IR sensors and IR/UV sensors for enhanced-performance

Sensors2

	IMU Sensor	Vibration Sensor
Desc	9-Axis Accelerator/Angular Velocity/ Magnetometer	Vibration Velocity, Displacement & Frequency
ITEM		
MODEL	<ul style="list-style-type: none">· High Precision Accelerator/ Angle Velocity / Magnetic Field detector· Module & Case type Products for VR device, Robot, UAV, AGV, Platform Stability, Auto Safety System, etc.	<ul style="list-style-type: none">· 3-axis vibration velocity, 3-axis vibration displacement, vibration frequency,· Magnetic or Screw for firm and stable connection· Module & Case type Products for Water pump, Electric Machinery, Engine Vibration Monitoring, Water Tower Monitoring, etc.

Power Block



Power Supply	Category	Wattage Range	Features
DC-DC	Brick Type	33 – 800W	Quarter, half and full bricks 2:1, 4:1, 8:1, 12:1 14:1 18:1 Input range
	M2 grade high reliability	30 to 300W	DIP 1x1,2.05x1.2, Quarter, half bricks Up to 8:1 input range
	Railway	6.6W – 600W	EN 50155, UL 62368-1, UL 60950-1 EN 45545-2, Shock & Vibration
	Low Power	1 - 75W	SIP, SMD, DIP 24, 1x1, 2x1” 1x1.6”, 2x2”, 2.05x1.2” Up to 18:1 Input Range
AC-DC	ITE & Industrial	4 – 750W	Open frame, Encapsulated, Base-plate cooled (IEC/EN62368-1)
	Medical	15 – 500W	Open frame, Encapsulated, Adapters, Base-plate cooled (IEC/EN 60601-1)



Charger Adapter



Efficiency $\geq 90\%$

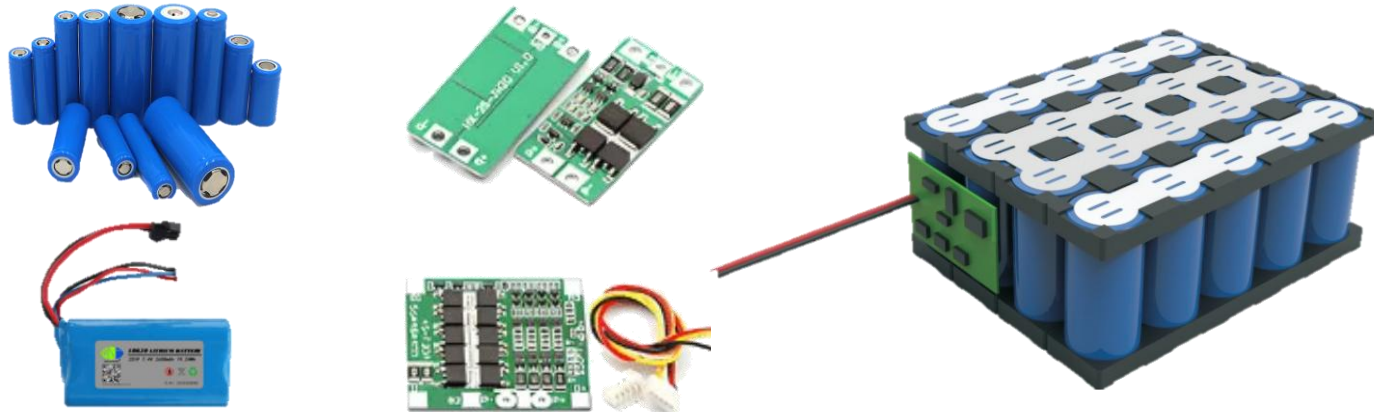



Battery Charger / Power Adapter / LED Power Supply												
Input	Voltage		100-240 VAC		Frequency		50-60 HZ					
Output	Voltage		28.8 V		Current		8 A		Power max		280 W	
Dimension	210 X 108 X 48 MM					Weight			1 kgs / pcs			
Certification	UL CUL GS UKCA CE SAA KC PSE 3C											

Memory Storage - SSD / SD card / DRAM / eMMC

	SSD / SDCARD	DRAM Module
SPEC	Industrial SPEC -40 C ~ +85 C 3 year warranty	Industrial SPEC -40 C ~ +85C 5years warranty
ITEM		
MODEL	<ul style="list-style-type: none">• SSD - M.2 / SATA / 1.8" / 2.5"• SD Card - Micro SD / Embedded Emmc• FLASH CARD• USB Disk	<ul style="list-style-type: none">• DRAM Module• DDR 4• DDR 5

Battery Pack

	Li-Ion	Li Polymer																																													
SPEC	<table><tr><td rowspan="3">18650</td><td>3.2 and 3.7V</td></tr><tr><td>2000 to 4000mah</td></tr><tr><td>1C to 10C</td></tr><tr><td rowspan="3">21700</td><td>3.7V</td></tr><tr><td>4000 to 5000mah</td></tr><tr><td>1C to 5C</td></tr><tr><td rowspan="3">26650</td><td>3.2 and 3.7V</td></tr><tr><td>2500 to 5000mah</td></tr><tr><td>1C to 20C</td></tr><tr><td rowspan="3">32700</td><td>3.2V</td></tr><tr><td>6000mAh</td></tr><tr><td>1C</td></tr><tr><td>Others</td><td>18350,18500,14500,14650,14450,14430,10440,13380,16500,33138</td></tr></table>	18650	3.2 and 3.7V	2000 to 4000mah	1C to 10C	21700	3.7V	4000 to 5000mah	1C to 5C	26650	3.2 and 3.7V	2500 to 5000mah	1C to 20C	32700	3.2V	6000mAh	1C	Others	18350,18500,14500,14650,14450,14430,10440,13380,16500,33138	<table><tr><th>MODEL</th><th>CAPACITY</th><th>REMARKS</th></tr><tr><td>9017130</td><td>2100mAh</td><td>Extra long</td></tr><tr><td>154545</td><td>210mAh</td><td>Ultra Thin</td></tr><tr><td>471162</td><td>260mAh</td><td>Ultra Narrow</td></tr><tr><td>802540</td><td>750mAh</td><td>Low Temperature</td></tr><tr><td>955565</td><td>5000mAh</td><td>High Temperature</td></tr><tr><td>702193</td><td>1200mAh</td><td>10C rate Discharge</td></tr><tr><td>123030</td><td>950mAh</td><td>3C rate Charge</td></tr><tr><td>383559</td><td>800mAh</td><td>2C Charge, 5C Diascharge</td></tr></table>	MODEL	CAPACITY	REMARKS	9017130	2100mAh	Extra long	154545	210mAh	Ultra Thin	471162	260mAh	Ultra Narrow	802540	750mAh	Low Temperature	955565	5000mAh	High Temperature	702193	1200mAh	10C rate Discharge	123030	950mAh	3C rate Charge	383559	800mAh	2C Charge, 5C Diascharge
	18650		3.2 and 3.7V																																												
			2000 to 4000mah																																												
		1C to 10C																																													
	21700	3.7V																																													
		4000 to 5000mah																																													
		1C to 5C																																													
	26650	3.2 and 3.7V																																													
		2500 to 5000mah																																													
		1C to 20C																																													
32700	3.2V																																														
	6000mAh																																														
	1C																																														
Others	18350,18500,14500,14650,14450,14430,10440,13380,16500,33138																																														
MODEL	CAPACITY	REMARKS																																													
9017130	2100mAh	Extra long																																													
154545	210mAh	Ultra Thin																																													
471162	260mAh	Ultra Narrow																																													
802540	750mAh	Low Temperature																																													
955565	5000mAh	High Temperature																																													
702193	1200mAh	10C rate Discharge																																													
123030	950mAh	3C rate Charge																																													
383559	800mAh	2C Charge, 5C Diascharge																																													
		<table><tr><td>Rated capacity</td><td>1200 mAh</td></tr><tr><td>Rated voltage</td><td>3.7V</td></tr><tr><td>Standard discharge current</td><td>240 mA</td></tr><tr><td>Maximum discharge current</td><td>1200 mA</td></tr><tr><td>Charging mode</td><td>Constant current and constant voltage charging</td></tr><tr><td>Maximum charging current</td><td>1200 mA</td></tr><tr><td>Charging voltage limit</td><td>4.2V</td></tr><tr><td>Internal resistance of battery</td><td>≤120 mΩ</td></tr><tr><td>Discharge temperature</td><td>-20~60 °C</td></tr></table>	Rated capacity	1200 mAh	Rated voltage	3.7V	Standard discharge current	240 mA	Maximum discharge current	1200 mA	Charging mode	Constant current and constant voltage charging	Maximum charging current	1200 mA	Charging voltage limit	4.2V	Internal resistance of battery	≤120 mΩ	Discharge temperature	-20~60 °C																											
Rated capacity	1200 mAh																																														
Rated voltage	3.7V																																														
Standard discharge current	240 mA																																														
Maximum discharge current	1200 mA																																														
Charging mode	Constant current and constant voltage charging																																														
Maximum charging current	1200 mA																																														
Charging voltage limit	4.2V																																														
Internal resistance of battery	≤120 mΩ																																														
Discharge temperature	-20~60 °C																																														
Images																																															

Application – 협동로봇 / 서비스로봇

Mobility Control (AP, Edge AI)

- Nvidia Jetson + Carrier board
- Edge box
- AP + NPU Module (ex : Intel CPU + Hailo NPU)
- Qualcomm / Intel / Rockchip based AP



Display (LCD,OLED) Customizing

- LCD : 1.9" ~ 24"
- OLED : 1.9" ~ 13.3" QXGA



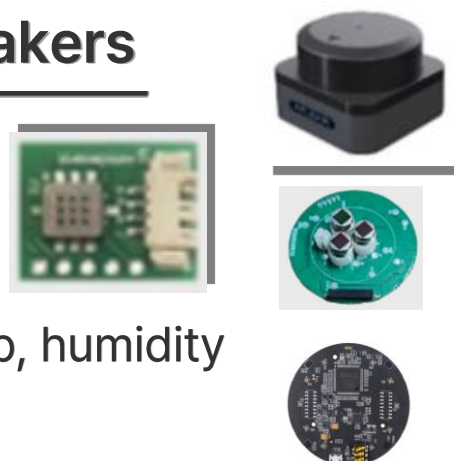
Memory & Storage

- SSD / uSD card
- DRAM module (SO-DIMM / U-DIMM)



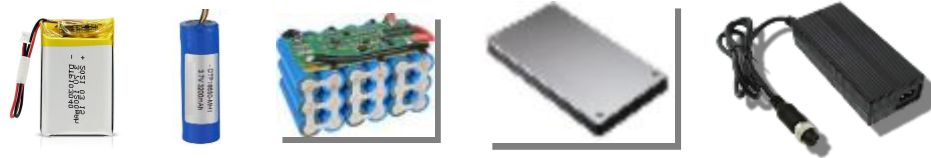
Sensors & MIC/Speakers

- LiDAR / ToF sensor
- IMU / Vibration sensor
- Flame detection
- VOC / CO2 (Other GAS) / temp, humidity
- MIC/Speaker board



Charger & Battery

- DC/DC & AC/DC Converter (Wide Input & Output range)
- AC/DC Adapter/ Barrey Charger Adapter
- Lithium ion / Lithium polymer
- Battery pack (BMS)



Camera Module

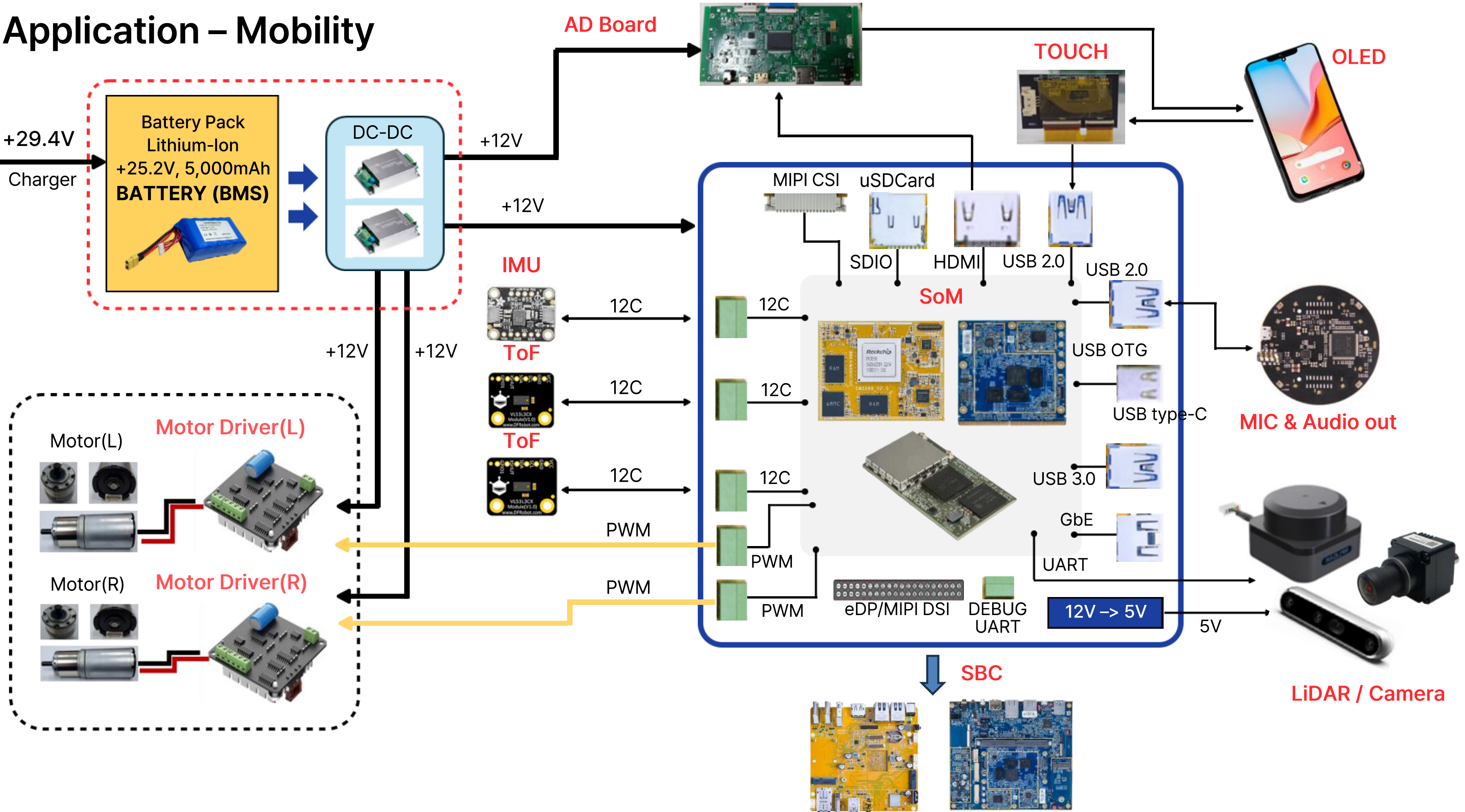
- GMSL / Stereo Camera
- USB3.0 (1080P 30FPS)
- Depth Camera
- 열화상 (Thermal Imaging)



Wireless (WiFi/BT/LTE/5G)



Application – Mobility



Application – 반려로봇

Robot Control

- Intel CPU (Intel Atom® x7000RE Series, Intel® Processor N-series, and Intel® Core™ i3-N305 Processors) + Hailo NPU Edge box (Hailo-8™ edge AI processor)

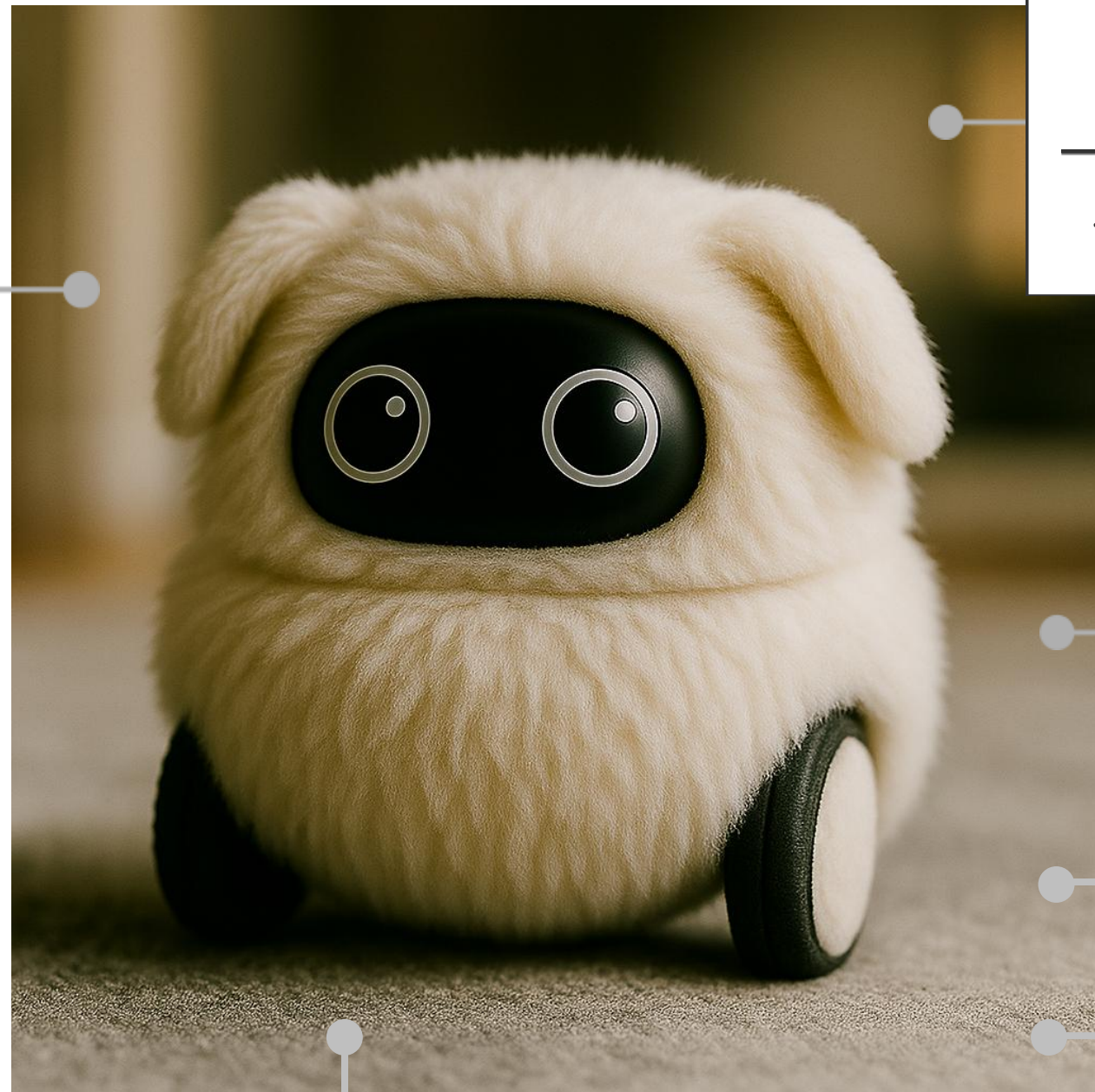


- Jetson Orin NX / AGX Orin



- Processor : Rockchip RK3588. 4x Cortex-A76 cores @ 2.4GHz + 4x Cortex-A55 cores @ 1.8GHz
- NPU : 6 TOPS

Quad Cortex-A76 2.4GHz
+
Quad Cortex-A55 1.8GHz



Display (LCD) Customizing



- 5" (Round LCD Display)

Memory & Storage

- SSD / uSD card
- DRAM module (S0-DIMM / U-DIMM)



Charger & Battery

- Lithium-ion battery
- AC/DC Adapter/ Barrey Charger Adapter

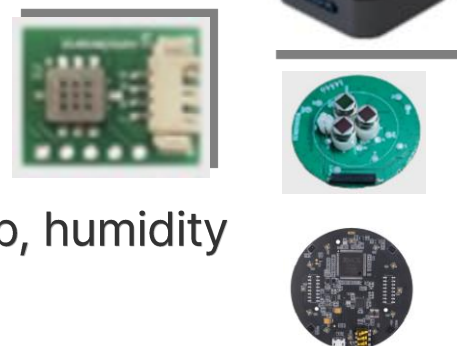


Wireless (WiFi/BT)



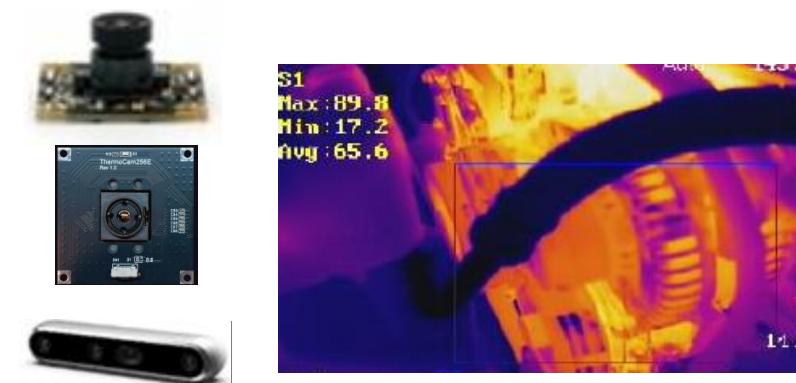
Sensors & MIC/Speakers

- LiDAR / ToF sensor
- IMU / Vibration sensor
- Flame detection
- VOC / CO2 (Other GAS) / temp, humidity
- MIC/Speaker board



Camera Module

- USB3.0 (1080P 30FPS)
- Realsense D430 + HSF
- 열화상 (Thermal Vision)



Application – Humanoid Robot

Robot Control

- de next-RAP8 (Card size)
86mm x 55mm Single Board with
13th Generation Intel® Core™
i7/i5/i3 Processor



- Jetson Orin NX / AGX Orin



- Processor : Rockchip RK3588. 4x
Cortex-A76 cores @ 2.4GHz + 4x
Cortex-A55 cores @ 1.8GHz
- NPU :
6 TOPS

Quad Cortex-A76 2.4GHz
+
Quad Cortex-A55 1.8GHz



Camera Module

- GMSL / Stereo / Depth Camera
Depth Algorithm Running on NVIDIA Platform
- USB3.0 (1080P 30FPS)
- Realsense D430 + HSF
- 열화상 (Thermal Vision)

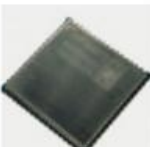


Memory & Storage

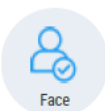
- SSD / uSD card
- DRAM module
(SO-DIMM / U-DIMM)



Wireless (WiFi/BT/LTE/5G)



AI Vision



+

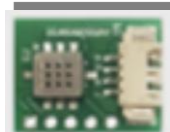


POI alerts, access control, PPE detection



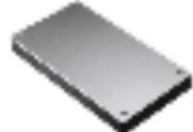
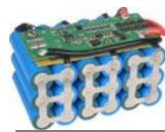
Sensors & Audio Speakers

- IMU / Vibration sensor
- ToF / Depth Camera
- Flame detection
- Gas / CO2 / Dust /
temp humidity



Charger & Battery

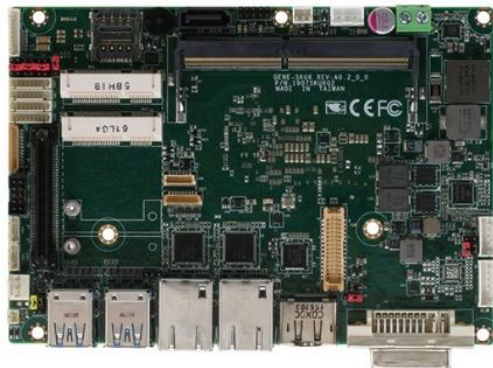
- Lithium-ion battery
- AC/DC Adapter/ Battery Charger
Adapter



Application – Four legged robot

Robot Control

- GENE-SKU6 3.5" SubCompact Board with Intel® Core™ i7/i5/i3/Celeron® Processor SoC

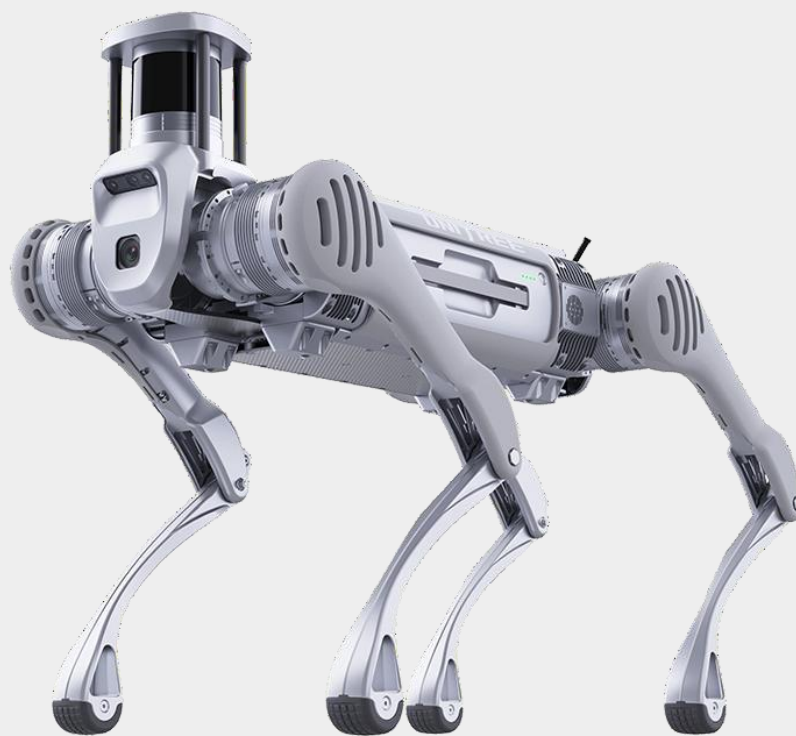


- Jetson Orin NX / AGX Orin



- Processor : Rockchip RK3588. 4x Cortex-A76 cores @ 2.4GHz + 4x Cortex-A55 cores @ 1.8GHz · NPU : 6 TOPS

Quad Cortex-A76 2.4GHz
+
Quad Cortex-A55 1.8GHz



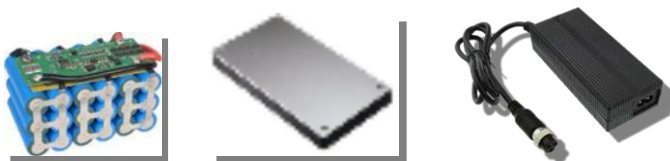
Camera Module

- GMSL / Stereo / Depth Camera
- Depth Algorithm Running on NVIDIA Platform
- USB3.0 (1080P 30FPS)
- Realsense D430 + HSF
- 열화상 (Thermal Vision)



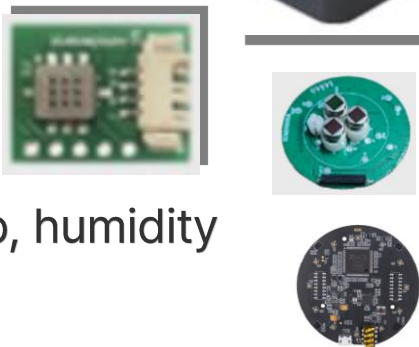
Charger & Battery

- Lithium-ion battery
- AC/DC Adapter/ Barrey Charger Adapter



Sensors & MIC/Speakers

- LiDAR / ToF sensor
- IMU / Vibration sensor
- Flame detection
- VOC / CO2 (Other GAS) / temp, humidity
- MIC/Speaker board



Wireless (WiFi/BT/LTE/5G)



Memory & Storage

- SSD / uSD card
- DRAM module (S0-DIMM / U-DIMM)



Application – Security robot

Robot Control

- de next-RAP8 (Card size)
86mm x 55mm Single Board with
13th Generation Intel® Core™
i7/i5/i3 Processor



- Jetson Orin NX / AGX Orin



- Processor : Rockchip RK3588. 4x
Cortex-A76 cores @ 2.4GHz + 4x
Cortex-A55 cores @ 1.8GHz
- NPU : 6 TOPS

Quad Cortex-A76 2.4GHz
+
Quad Cortex-A55 1.8GHz



Camera Module

- USB3.0 (1080P 30FPS)
- Realsense D430 + HSF
- 열화상 (Thermal Vision)



Wireless (WiFi/BT/LTE/5G)

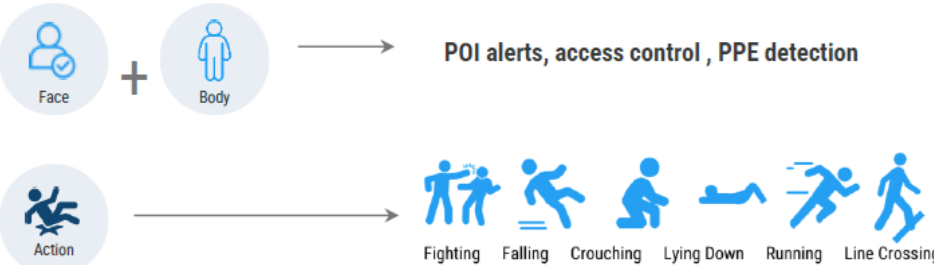


Charger & Battery

- Lithium-ion battery
- AC/DC Adapter/ Barrey
Charger Adapter



AI Vision



Sensors & Audio Speakers

- IMU / Vibration sensor
- ToF / Depth Camera
- Flame detection
- Gas / Co2 / Dust /
temp humidity



Memory & Storage

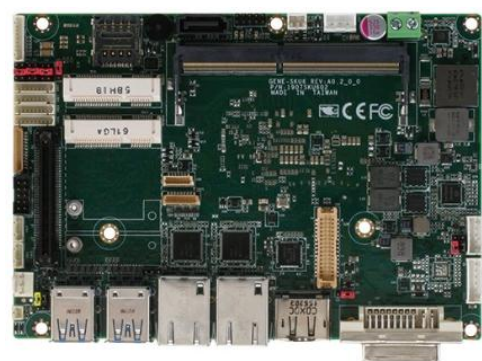
- SSD / uSD card
- DRAM module
(SO-DIMM / U-DIMM)



Application – Human robot hand

Robot Control

- GENE-SKU6 3.5" SubCompact Board with Intel® Core™ i7/i5/i3/Celeron® Processor SoC



- Jetson Orin NX / AGX Orin



- Processor : Rockchip RK3588. 4x Cortex-A76 cores @ 2.4GHz + 4x Cortex-A55 cores @ 1.8GHz
- NPU : 6 TOPS

Quad Cortex-A76 2.4GHz
+
Quad Cortex-A55 1.8GHz



HUMAN ROBOT HAND



Robot Motion Controller



Wireless (WiFi/BT/LTE/5G)



Power Supply

- Power Supply & Adapter



Memory & Storage

- SSD / uSD card
- DRAM module (S0-DIMM / U-DIMM)

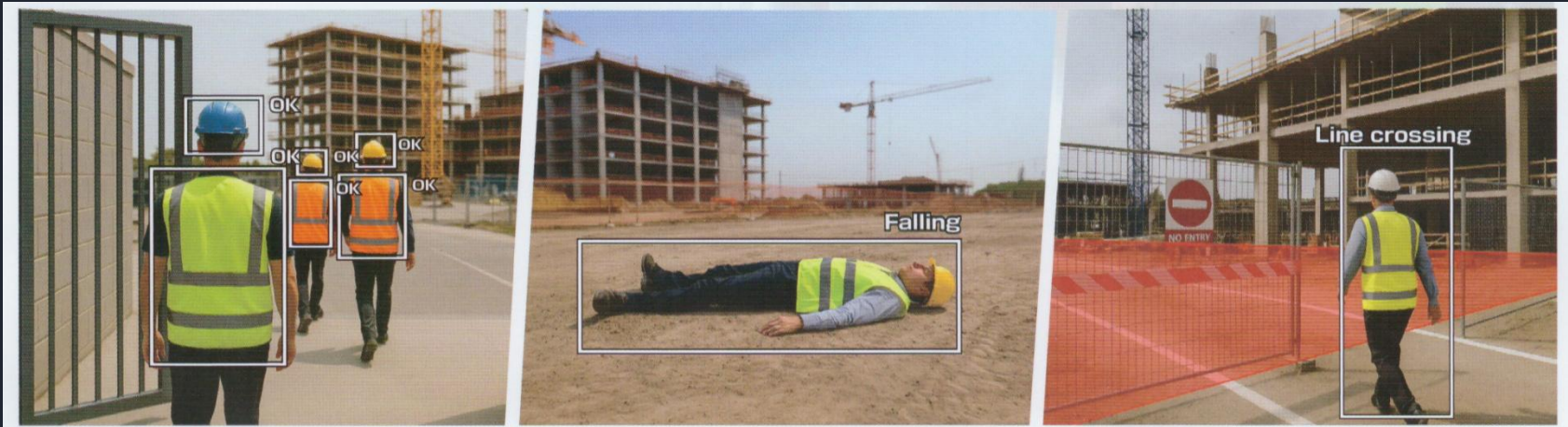


Vision AI

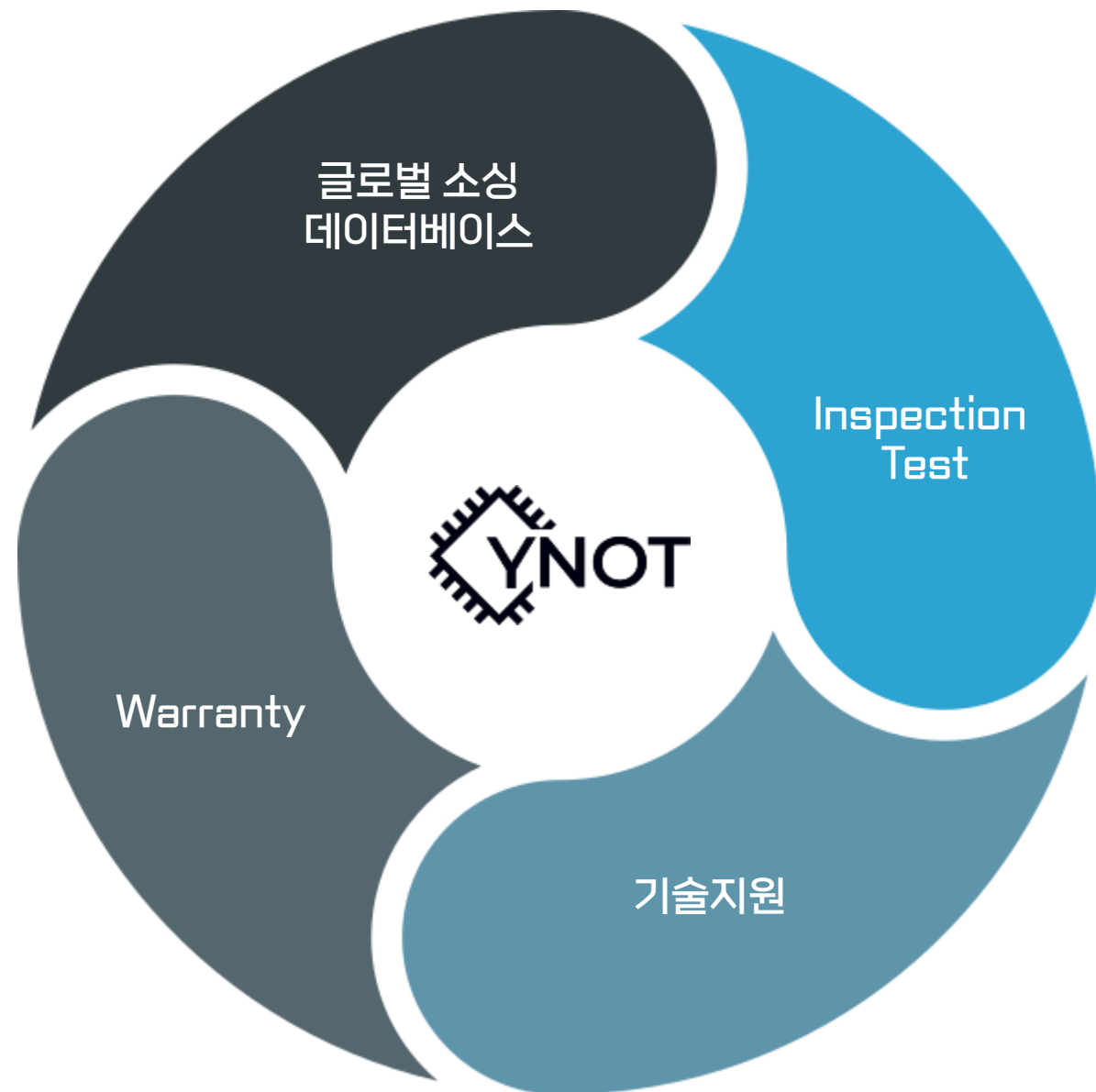


네트워크 CCTV
(최대 4대)

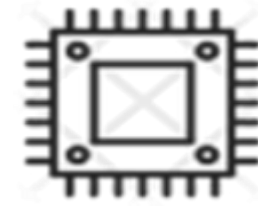
· 건설현장에서의 Vision AI



단 납기 턴키 소싱 (Sourcing)



- 필요한 만큼만
- 생산 스케줄에
- 원하는 가격에
- 원하는 품질로



CPU

BROADCOM®

REALTEK

MARVELL™
XILINX
ALL PROGRAMMABLE



MEMORY

Micron®

SAMSUNG

SK hynix



IC

ST
life.augmented

ANALOG
DEVICES

TEXAS
INSTRUMENTS



CONNECTORS

Amphenol®

HRS

TE
connectivity

AP Chipset Level Design



- SoC Roadmaps for POS/IPC/AIoT



Performance
Multi-Purpose

Great
Multi-Purpose

Good
Streamer



A55x4 , Mali-G57
32bit DDR3/DDR4/LPDDR4
AV1/**NPU**/DSP/VAD/MIPI DSI/HDMI 2.1a
USB 2.0 x2, USB 3.0 x1, PCIe 2.0 x2
10/100/**1000**



A78x4 , 70K+ DMIPS
Mali-G310V5, 4Kp60 UI
32bit LPDDR4x-4266/**LPDDR5**-5500/**LPDDR5X**-5500
VVC/DSP/AV1
Video Encoder: AV1 1080p
eDP/DP/HDMI 2.1b
USB 2.0 x3, USB 3.2 gen 1 x2
PCIe 2.0 x1, PCIe 3.0 x1
10/100
AISR/AIPQ advance
ES: Q4'24
MP: Q4'25



● Production
● Developing
● Planning

Embedded H/W & S/W ODM Service

1. Hardware Development Service

- MPU/MCU based Hardware Design (Renesas/Qualcomm/NXP/Rockchip/Nvidia)
- **Hardware Customizing Design Service (free)**
- PCB Drawing & Mechanical Design service
- Support Certification
- Process(KC/CE/FCC/TELEC)

2. Software Development Service

- Development Environment Support
- Device Driver Development Support
- Application Development Support
- Supported OS(Android/Linux/RTOS)

3. Project Management Service

- HW, SW Development Outsourcing
- Support Mass Production
- Developer Management
- Schedule Management

Customers

We are serving over 100+ customers including key players in the markets.

AUTOMOTIVE & CHARGER

HUMAX

SEBANG

Mobile Appliance

MEDIA HILLS

carvi

kyungshin

CHAEVI

DH AUTOWARE

CHEMTRONICS

STARKOFF

HY HWA YOUNG

DRIMAES

ROBOTIC / MOBILITY / AI

ing Robotics

everybot.

COGA robotics

IB TECH

Polaris3D

AIDIN ROBOTICS

Hanwha Aerospace

ROBOTIS

SK magic

HYODOL

신성멜타텍

DREAMTECH
SOLUTIONS COME FROM DREAMTECH

HY HWA YOUNG

엘티메트릭

Cellplus Korea
AI data solution @ Edge computing

suprema

Customers

We are serving over 100+ key players in the markets.

NETWORK & INDUSTRIAL Automation



MEDICAL & HEALTH CARE



Customers

We are serving over 100+ customers including key players in the markets.

Broadband Entertainment & Payment



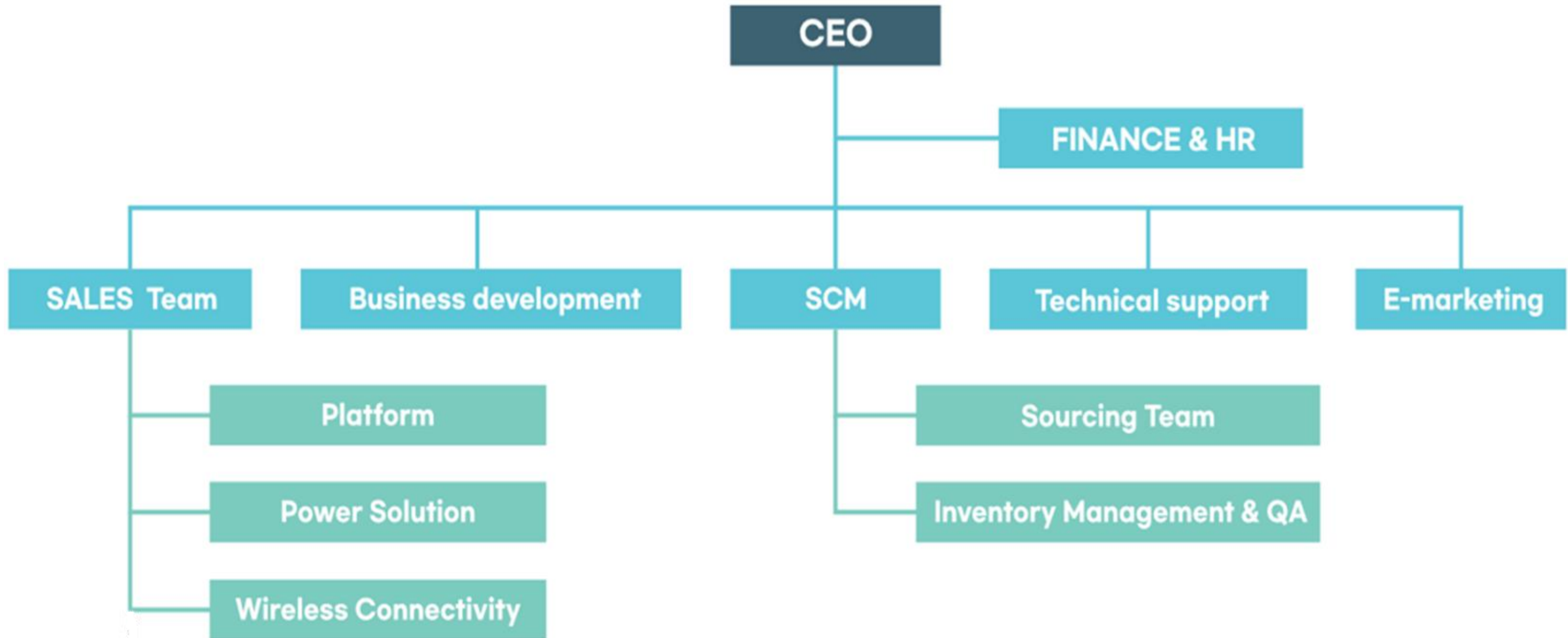
SMART HOME & AIoT



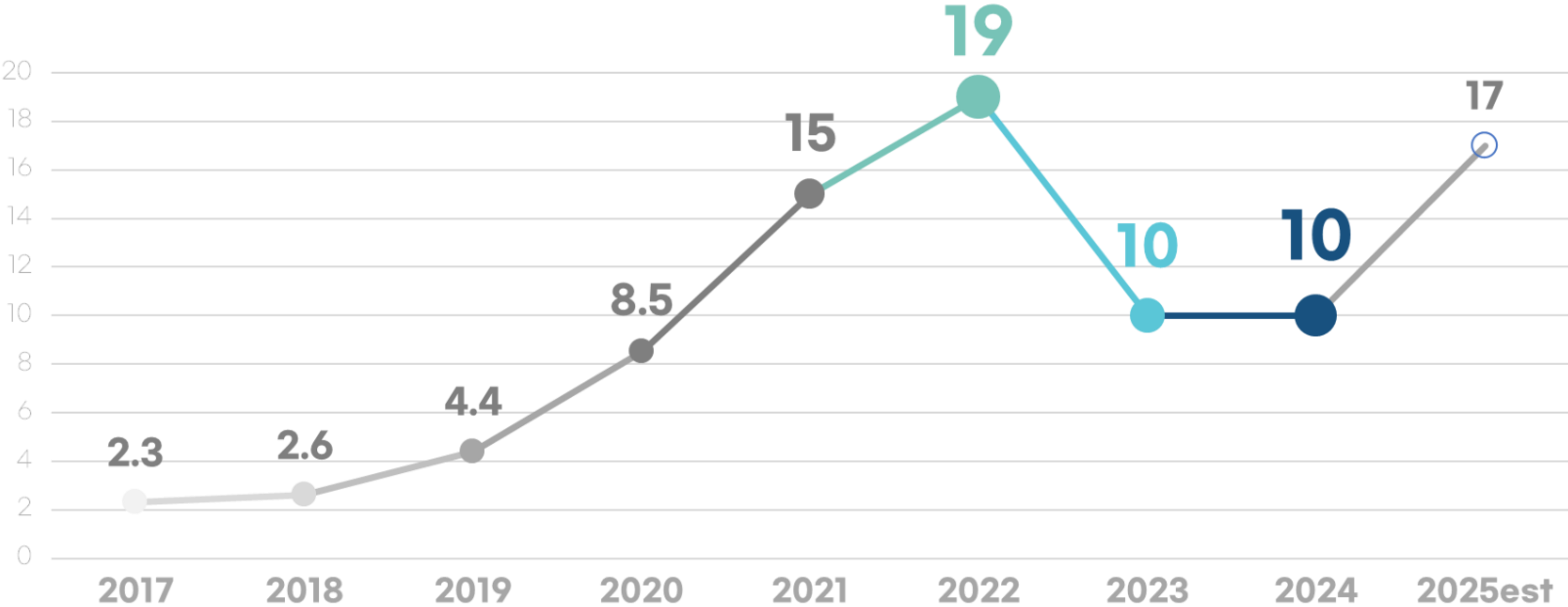
Partners



Organization



Growth Trend





주식회사 와이넷 Ynot Co., Ltd.

ADDRESS #617~621, 40, Yangcheon-ro 47-gil, Gangseo-gu, Seoul, Korea

서울특별시 강서구 양천로47길 40 놀라움마곡 617-621호 (07522)

TEL +82 70 4130 7799

E-MAIL Sales : sales@y-not.kr | Technical support : tech@y-not.kr

WEBSITE www.y-not.kr

